

Operating Instructions
for the
Freedom Split System Chair



Model -DE08 - Premium Lite Chair

It is very important to read the Operating Instructions and Safety Guide prior to using the Freedom Split System Chair for the first time.



TABLE OF CONTENT

1. Separating and Re-Joining	2
2. Separating the Chair Segments	2
3. Joining the Chair Segments.....	4
4. Installing the Joystick.....	6
5. Adjusting the Armrests.....	7
6. Manual Freewheel Operation	7
7. Battery and Connecting Battery Cable	8
8. Joystick Operation	8
9. Battery Charging.....	9
10. Off - Board Charger	10
11. Anti - Tip Wheels	10
12. Transport and Storage	10
13. Maintenance.....	11
14. Safety Guide.....	12



1. Separating and Re-Joining

These next two sections refer to instructions for the Premium Lite Chair Model DE08 and relate to separating or splitting the chair into two segments for ease of lifting into and out of a car boot and then the subsequent re-joining or assembly of the Premium Lite Chair back together for standard or normal chair operation.

To avoid unnecessary component damage please ensure that the below mentioned separating and joining steps are understood.

2. Separating the Chair Segments

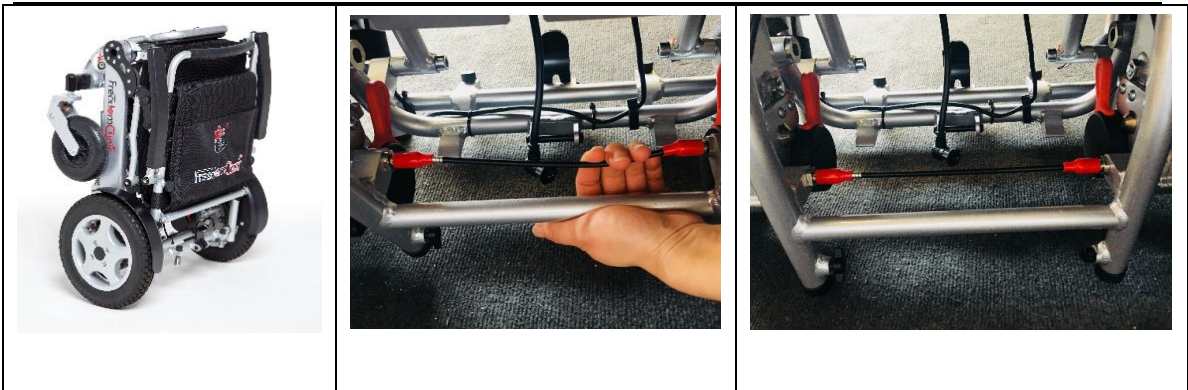
Step 1

- With the chair unfolded / folded out take the left plug out from the black controller box as shown in the picture below
- For reference purposes this is the cable that goes up to the joystick
- Undo the outer knurled ring of the plug and pull the connector out of the receptacle



Step 2

- Now put the chair into the fully folded position standing upright - see the Left picture (L - Left picture)
- Pull the black cable to release the lock - M (Middle picture) and pull the metal bar to position stand into the outer locking position as shown in - R (Right picture)
- Doing this will make sure that once the Drive segment is separated, the Drive segment will stand on its own once the chair has been separated



Step 3

- Looking down on the folded chair pull the metal release bar into the direction indicated by the arrow with your thumb to release the frame lock - L (Left picture) and as shown in - M (Middle Picture)
- Then lift the frame to separate the chair as depicted - R (Right picture)



Step 4

- Pull the frame stand bar out and down so the frame segment can stand up when both segments are separated - L (Left picture)
- Chair will split into two segments - R (Right picture)



WARNING RE-CHECK TO ENSURE THE ABOVE STEPS HAVE BEEN COMPLETED BEFORE STOWING THE CHAIR FOR TRAVEL

3. Joining the Chair Segments

Step 5

- When joining the two chair segments back together, it is important to first identify the back of each segment so they are lined up correctly and they can be joined back together
- Back of the Drive segment showing black controller box and plugs - L (Left picture) and the back of frame segment showing rear of the seat backrest and the logo - R (Right picture)



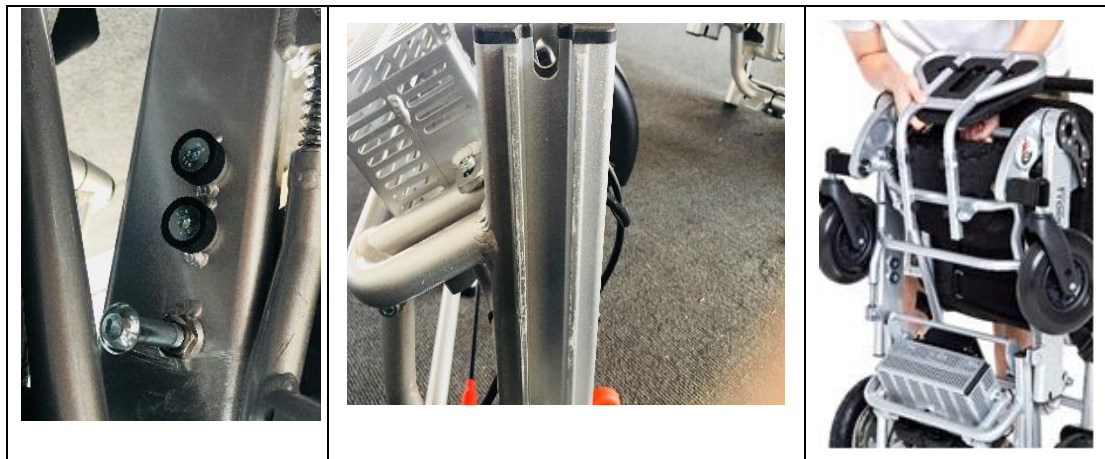


Step 6

- Pull the frame stand back up into original position refer to step 4 - L (Left picture)
- Make sure this is done before attempting to join the chair as the frame stand would form an obstruction to joining

Step 7

- Standing at the back of the chair line up the two black wheels on the inside of both sides of the frame segment - L (Left picture) with the slots on both sides of the Drive segment - M (Middle Picture)
- Lower the frame segment into the Drive segment - R (Right picture)
- The two segments should automatically lock into place



Step 8

- Position drive segment stand back to original inner lock position refer to step 2 - M (Middle picture)

Step 9

- When chair is folded out re-insert plug back into controller box and tightening refer to step 1.

WARNING RE-CHECK TO ENSURE THE ABOVE STEPS HAVE BEEN COMPLETED BEFORE CONDUCTING NORMAL OPERATIONS



4. Installing the Joystick

Step 1

Take the joy stick from the travel pouch under the seat. Fix on the mounting plate under the front of the armrest (left or right armrest). The Joystick mounting plate is depicted below. Close up of fixed joystick and It should look like below when fitted.



Step 2

Insert the male and female ends of the joystick plug as depicted below L making sure the arrows are aligned on each end of the plug.

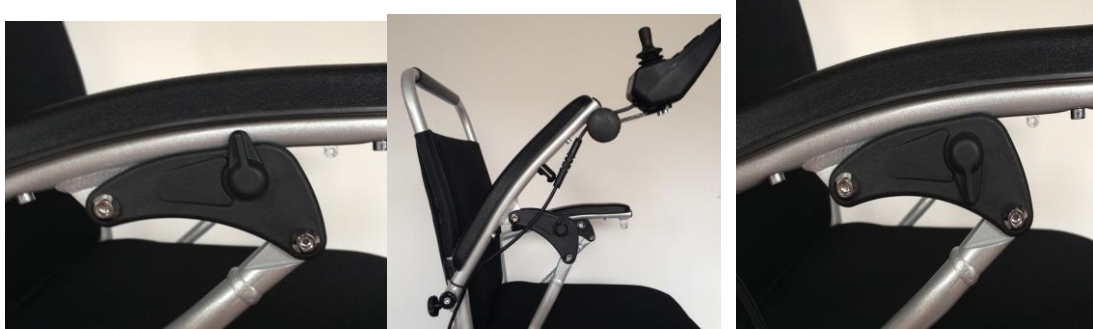


The Mounted Joy Stick Should Look Like above picture



5. Adjusting the Armrests

Turn the lock knob anticlockwise up to lift the armrest up and down to lock the armrest down.



6. Manual Freewheel Operation

WARNING NO BRAKING EXISTS WHEN IN FREE WHEEL MODE

Press down on the red clutch handle as depicted below on both sides of the wheelchair to move to freewheel position, this disengages electromagnetic brakes. This enables the wheelchair to be pushed from behind.

In this position the user cannot operate the wheelchair.



Important - user must have the electromagnetic brakes engaged for the drive system to operate. You can tell if the brakes are engaged because the chair cannot be pushed. If one side of the chair moves and the other does not, then flip the red lever in the same position as the side that does not move.



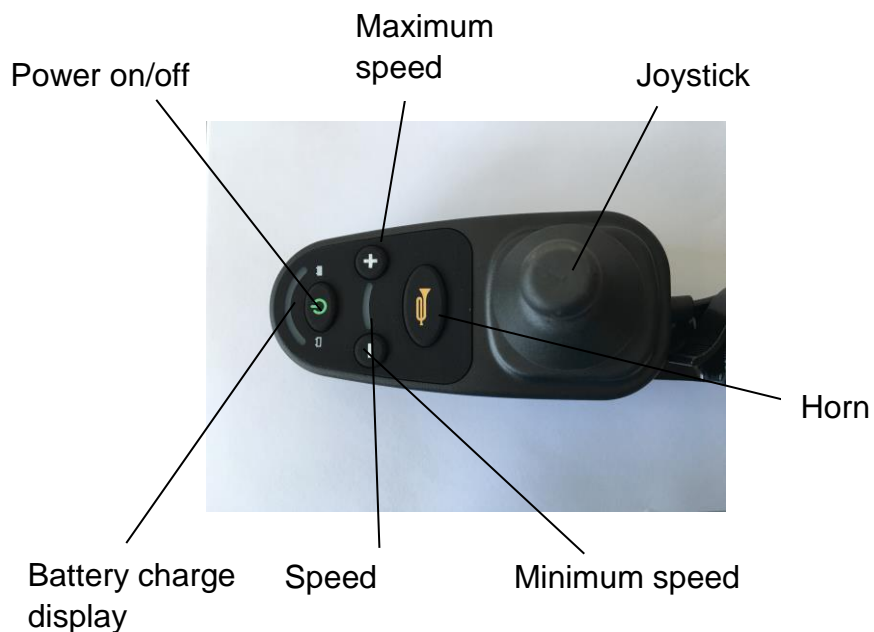
7. Battery and Connecting Battery Cable

Just slide the battery into the battery compartment as below, it will lock in place when fully inserted. When taking battery out there is a lever to press under the battery to release the lock. Connect the battery cable plug into the battery as below ensuring plug is aligned.



If you have purchased a second battery or a third battery if you have the premium model, you will need to connect the battery connector from one battery to the other.

8. Joystick Operation





- Joystick: controls the chair's direction and speed. Move joystick in direction you want to move. The more you push in any direction the faster you will move. Release joystick for automatic braking
- Power: press to turn power on/off
- Speed display: Maximum speed current level displayed around speed control
- Maximum speed: press to adjust to higher maximum speed setting
- Minimum speed: press to adjust to slower maximum speed setting
- Battery charge display: Current battery charge displayed around power button
- Horn: that sounds when the user presses the button

9. Battery Charging

Always charge the battery only at the charging point under the joystick as depicted below.

Make sure the power button on the wheelchair is turned off before charging. Insert the charger into the socket making sure the plug pin orientation is in the correct position.

The charger light will turn on when connected. Red indicates charging, green fully charged. It can take up to 6 hours to fully charge lithium battery.

The charger can be left on overnight.

Charge the battery fully at least every month to avoid over discharging damage to the battery.





10. Off - Board Charger

If you have purchased the off-board charger connector cable, you can charge the battery independent of the wheelchair. Take the battery out of the wheelchair and connect one end to the battery charger, and the other end to the battery.

11. Anti - Tip Wheels

For safety reasons it is highly recommended you use the anti- tip wheels. For Lite and Premium models, you will need to insert them. They are stored in the travel pouch. Insert into the end of the tubes near the back wheels and tighten by turning the plastic wing nut. It should look like below.



12. Transport and Storage

- Stand the chair up when fully folded, or lay it down.
- Folded chair can easily be transported in the car boot.
- The battery should be fully charged and the chair should be placed in cool, dry, and ventilated condition when in storage.
- The battery needs to be charged at least once every month when in storage to avoid over-discharge damage.
- When picking the chair up hold onto the metal frame not plastic components.



13. Maintenance

- Periodically (every 6 months or so) check the frame screws to see if they are loose.
 - Tighten them as necessary.
- Check if the front and rear wheels are rotating easily.
 - If there is significant resistance the bearing might need changing.
- Check if the tyres, armrests and other rubber and plastic parts are wearing.
 - Replace them accordingly.
- Check the folding locks work. If it is loose or jamming,
 - please replace it promptly.
- Check the anti - tip wheels. If it is loose or jamming,
 - please replace it promptly.
- Parts replacement should be done by professional repair shop or maintenance service personnel.
 - DO NOT replace them by yourself.

Your Freedom Chair should have a maintenance and safety check annually to ensure it's performing in tip top condition. If you are ever concerned about anything please contact your service provider.



14. Safety Guide



Transferring in and out of the Freedom Chair

- Make sure the electromagnetic brakes are engaged so the chair will not move when getting in and out.
- If the chair moves flip the (red levers).
- Do not power on the chair and touch the joystick until you are safely seated and in control.
- Move the armrest and footrest out of the way before entering and exiting.



- The User
- The user must be of sound mind and judgment.
- The user must read this safety guide before operating the chair and be familiar with its components and features.
- The user should practice driving skills with assistance on open, flat, and safe grounds before normal use.



- Forward / Parking
- The user should practice moving forward and parking. before normal use
- To move forward, push the joystick forward lightly.
- To stop, release the joystick.



- Moving backwards
- The user must be aware of what is behind before manoeuvring backwards to avoid collisions. Push the joystick backwards lightly.



- Turning
- To turn, push the joystick to the left or right in the direction you want to go. Be aware of what is to the left or right to avoid collisions.



- Driving on bends
- Lightly push the joystick in the direction of the bend. Practice speed control.



- Practice avoiding obstacles
- Lightly push the joystick in either direction to avoid and manoeuvre around obstacles, practice speed control.



- Driving Faster
- Push the joystick all the way in the direction you want to go. Pull the joystick back to the middle if you do not feel you are 100% in control.



- Driving over small curbs
- Lightly push the joystick and drive slowly over the curb. The curb should not be higher than 3 centimetres.



- Driving Uphill
- Keep your body tilted forward to keep the centre of gravity stable. Drive slowly. We recommend the slope be less than 8 degrees for optimal performance and safety. Ensure anti – tip wheels are fitted.



- Entering& Exiting lifts
- The user should pay attention to the opening and closing intervals of the lift door to avoid collisions while entering or exiting the lift.



- Driving on pavements
- The user should stay on the pavement and avoid entering the motor vehicle lane unless crossing the street. Pay attention to obstacles and avoid contact with them.



- Crossing the street.
- Pay attention to avoid cars and only cross when it is safe to. Drive slowly over any threshold, to go back to the pavement, which should not be more than 3cm high.



- Hazards
- Don't cross railroad/train tracks alone, we highly recommend you be accompanied by an assistant,
- Driving on too steep slope may lead to a rollover accident and endangering
- Driving through too high step may lead to a rollover accident and endangering personal safety
- Pay attention to traffic light switching time when crossing the road. Otherwise, it may lead to endangering personal safety



- Maintenance
- Do not attempt to repair the Freedom Chair on your own. It may cause damage to the chair and could put yourself at risk of injury.



➤ Cleaning Care

- Do not hose down the chair with water. It will cause damage to the chair. Wipe down with a damp cloth.



➤ Battery Care

- Battery should avoid rain, moisture, otherwise it may cause a short
- Do not leave the battery in direct
- Do not place any items over or on the charger while it is charging. If the battery becomes hot, deformed, or emits an odour while charging, stop the charging immediately.